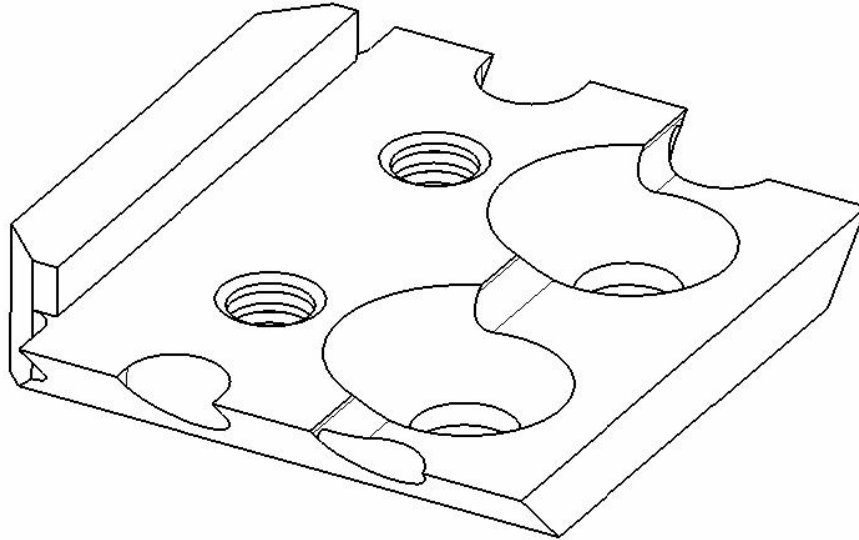
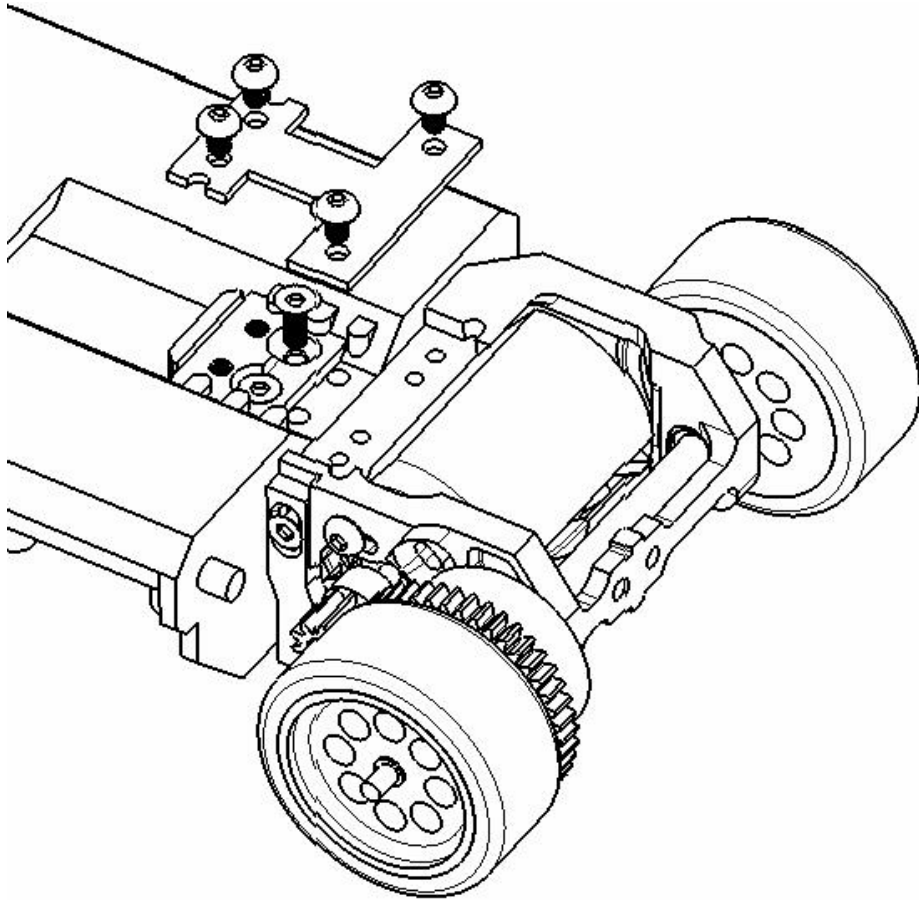


High Clamp Force T-Bar Mount



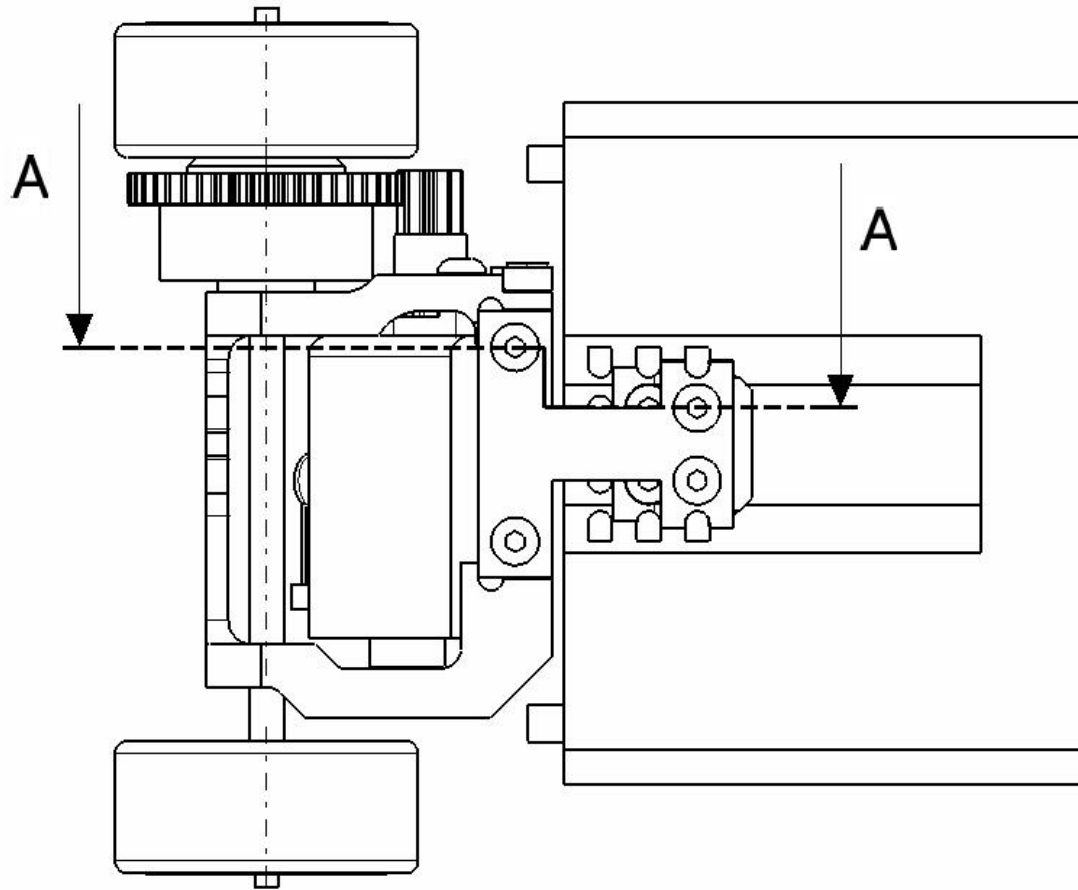
- Machined threads allow for higher clamping force on T-Bar to prevent shifting during high g-force cornering. Application of high torque to stock self tapping screws to prevent shifting of T-Bar often lead to stripped screw holes.
- Double length aluminum T-Bar Mount with 4 interlocking tabs to insure precise alignment with chassis. Alignment of T-Bar mount is achieved thru interlock of holder to chassis alignment tabs instead of self tapping screw torque.
- Countersunk crews are inserted one adjustment position after of T-Bar screw hole. Therefore, chassis with stripped holes for T-Plate can be salvaged with this T-Bar Mount that use a different hole location

Installation Instructions



- Note that since T-Bar Mount is double length, only the forward two T-Plate positions can be used on the chassis. (This is usually not an issue since the forward two position is enough to accommodate pretty much all bodies.)
- Install the two countersunk screws to hold the T-Bar Mount onto the chassis. Do not over tight the self tapping screws, or the hole on the chassis may strip.
- Fasten the T-Bar onto the holder with two machine screws. Be sure the machine screw threads protrude past the T-Bar Mount when the screws are seated. This will insure full thread engagement. Machine screws can then be torque tighter than the self tapping countersunk screws to securely fasten the T-Bar. Take care not to over torque machine screws.
- It is advisable to test fit the T-Bar on the holder with the machine screws first to verify that that the machine screw threads protrudes past the holder. A minimum of 1 thread protrusion is recommended.

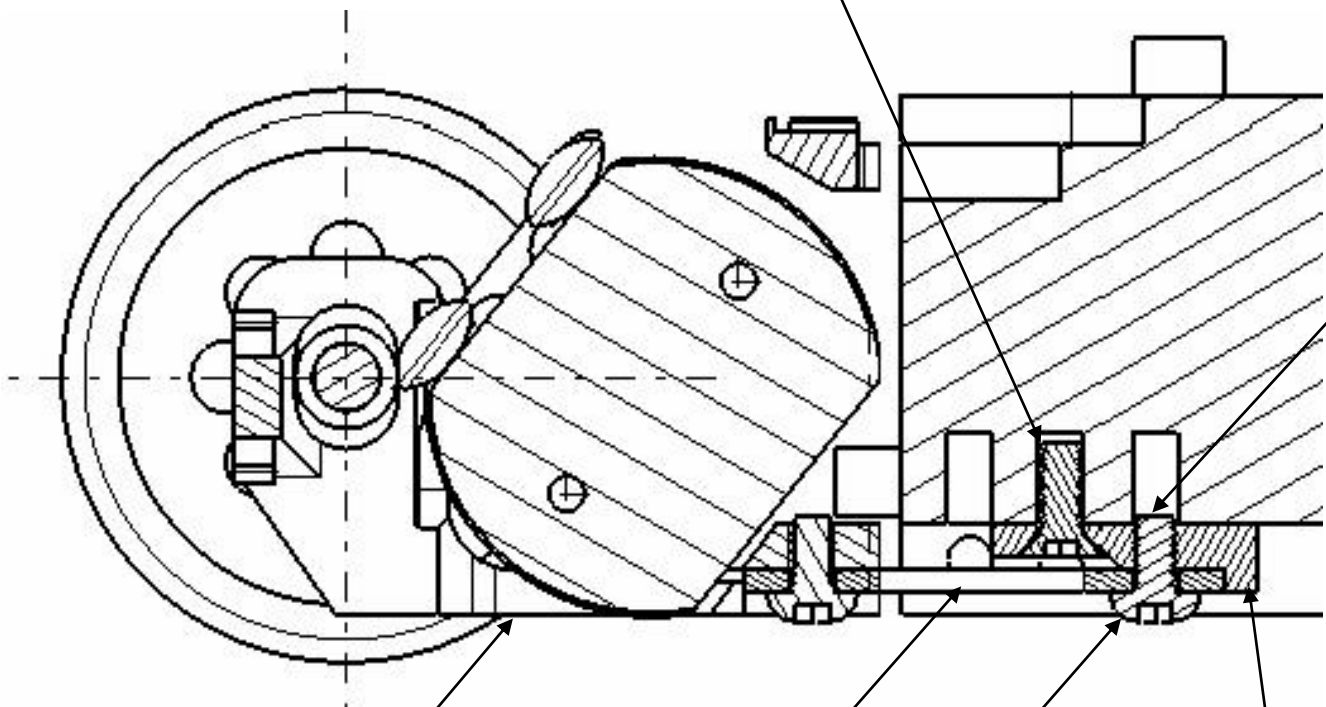
Installation Instructions



MR02 Chassis Bottom View

Installation Instructions – Section View

Counter Sunk Screw
Fastens T-Bar Mount
Mount to Chassis



Protrusion of machine
screw into chassis hole
ok.

Motor Mount
(Not Included)

T-Bar
(Not Included)

T-Bar
Screw

T-Bar Mount